



Fujita Works



Fujita Works
Company Profile



Why don't you come and see the scenery?

Fujita Works is located in Technopark adjacent to Jomon Forest in Uenohara, Kokubu, Kagoshima Prefecture. The view from the guest rooms on the 4th floor is spectacular, with the magnificent view of Sakurajima in front and Kinko Bay below. Furthermore, as you look to the north, a panoramic view spreads to Kirishima Renzan, which is known for Japan's national foundation myth, combined with fresh air, you would find your imagined scenery that is clearly different from when you are in the city. As it is said that the majority of the remains of the Jomon period was excavated in the place of a fine view, here in Uenohara, we might say, the landscape and the climate are also suitable for manufacturing. We are eager to have you come and enjoy the magnificent view.



MAIN OFFICE

*KIRISHIMA
2nd PLANT*

*KIRISHIMA
1st PLANT*

KOKUBU PLANT

Fujita Works has established a speedy and efficient production system with independent alliances in order to respond flexibly to customer needs. The 1st and the 2nd Kirishima plant are general production bases that respond to various needs, and at the Kokubu plant with enhanced expertise, we deliver high quality and diverse products.



Fujita Works will be DANTOTSU NO.1

From a Good Company to a Great Company

A leading company of high accuracy precision sheet metal that delivers security and reliability with original technology and ideas. This is Fujita Works.

Aiming for “DANTOTSU No.1”

Fujita Works has grown greatly, and we deeply appreciate all the support we have received by everyone. However, we are never satisfied with what we have achieved so far. We have a big mission to fulfill as a pioneer in precision sheet metal, and we have a dream vision. We have provided and will continue to provide the value which customers really require. To be “Great”, not “Good”. To have people think “Only Fujita Works can do this”, not “It was good that Fujita Works did it”. That is the goal we should aim for.

Fujita Works will never stop

It is important to keep moving forward every day, and constantly think of ideas. We have a mission to accurately grasp the current situation in the world where we cannot see the future, and to provide greatly added value to our customers. Also, our employees who share the vision can intuitively judge things and respond quickly. Having overwhelming mobility and satisfying customers leads to our pleasure. It then brings us a certain pride and a return to society. It is not only economic activities that pursue profits which lead to prosperity or development. Our goal is to be able to contribute to the world together with our customers.

To take a journey is one of the best things in life

We, Fujita Works, as a pioneer of precision sheet metal has captured the original idea as a new concept. In addition, active introduction of the latest technology that anticipates the diversifying era and synergistic effect of the original production support system, create our outstanding productivity of which we are proud. We promise our customers that we will continue to provide greatly added value in quality and security based on our accumulated know-how. Also, not only committing ourselves to manufacturing, we value social contributions through business and work-life balance, and do our best to offer a great journey through life. To please customers, to enjoy work, to be proud of ourselves, to love and to be loved by family and community is our motto.

~There is no road without a dream~

There is no bright future unless you take one step and overcome something.

It is the time Fujita Works is heading to “DANTOTSU No.1”.

KOJI FUJITA
代表取締役社長 藤田 孝二

The Nine “vows” in the corporate symbol



The reverse pyramid shown in the corporate symbol of Fujita Works represents the “FIRE culture” that we promise “Customer Priority-ism”, “Comrade Priority-ism” and “Action Priority-ism”. In addition, the nine lines that make up the symbol consist of four management policies: customer first, original ability, important members and harmony with the society. The other five lines represents five action policies: challenging, rapidity, trust, gratitude and heartfelt enjoyment. We pledge that we always share these policies implied in the symbol and continue to offer satisfaction and good impressions to our customers.

Management Philosophy

Great company, Great life.

There is no road without a dream. We will challenge for the bright future and aim for DANTOTSU No.1 through the development of our business.

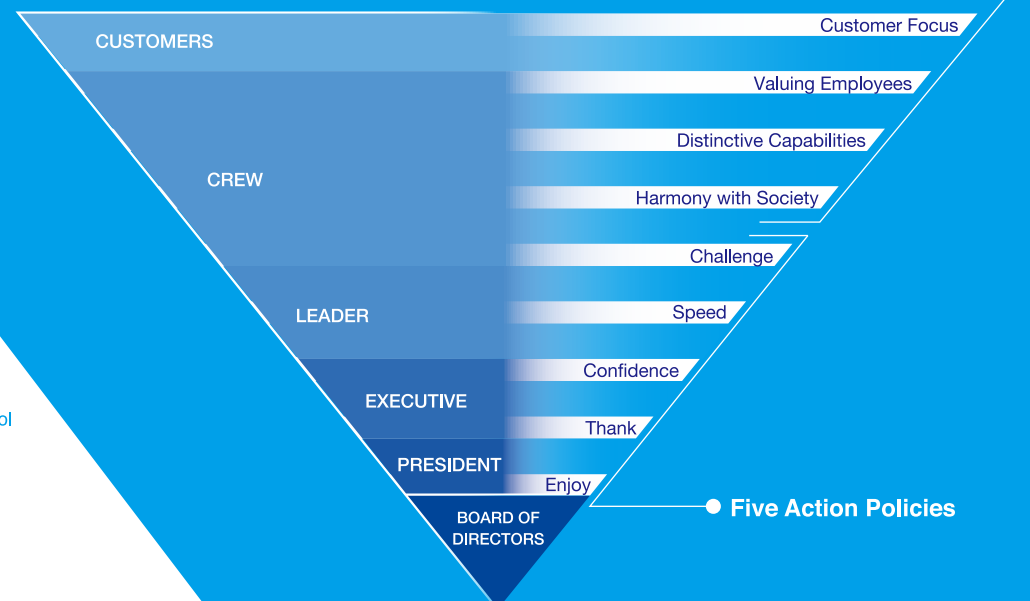
Company Spirit

There is no road without a dream. We will challenge for the bright future and aim for DANTOTSU No.1 through the development of our business.

Company Motto

Feel the flow of time,
Be ahead of the times
Let’s obtain real happiness with our hands.

Four Basic Ways of thinking ●



DANTOTSU NO.1

World Class Techniques

Waza 技

Fujita Work's precision sheet metal processing uses advanced technology. We introduce and update our processing facilities on a timely basis to respond closely to our customers' requirement. We have accumulated solid know-how through repeated trial and error, and have developed and realized our product processing which cannot be imitated elsewhere such as thin-sheet TIG welding. It is ideal for the semiconductor or liquid crystal manufacturing facility, and it lets us perform 100μm ultra-thin stainless welding and stainless welding of a few hundred micron. Moreover, we have earned a share of the worldwide market for product processing using Nickel or Titanium for the plant market. Fujita Works was selected in 2006 by the Ministry of Economy, Trade and Industry as one of "The 1st introducing 300 of Japan's Dynamic Monozukuri (Product Manufacturing) SEMs". In 2008, we also received "Excellent Enterprise Award of Good Company Grand Award" from The Medium and Small Business Research Institute, and were certificated as "Future Regional Leading Company" by the Ministry of Economy, Trade and Industry in 2017. Fujita Works is committed and its technology is highly regarded, not only in Japan, but also throughout the world.

CUTTING

抜き

Sharp Edge

The bicycle cuts shown below are cut by a high precision laser cutting facility from a 1mm thickness of steel plate. Its thinnest part is thinner than the plate, which is 200μm thin, and the tire treads are also cut out regularly and accurately. The bicycle parts are all connected and can be cut out with tremendous accuracy.



BENDING

曲げ

Fusion of technology and craftsmanship

We solve problems through bending with a combination of latest digital technology e.g. IOT network and analog technology by craftsmanship know-how.



Efficient production while maintaining high quality

The pitch bending is difficult to stabilize repeatedly, however, we maintain high quality no matter what the equipment or materials are.

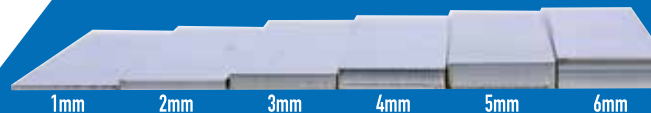
Processing of H7 accuracy

It was previously thought that it could only be done by machining, but we achieved this performance by laser with H7 accuracy in fit tolerance.



Different thicknesses can be cut simultaneously without any distortion

With our high quality of the laser facility, the cut surface is maintained in good quality even with different plate thicknesses from 1mm to 6mm. All products are cut sharp-edged, and the word "Burrs" does not exist here in Fujita Works.



Processing without deep drawing

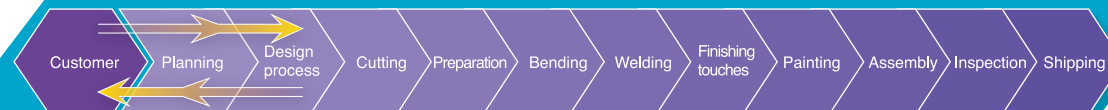
A mold is made and a product is processed using mass production. However, we reduce the design lead time and manufacture the product at a low cost. The product is achieved by bending structures.

TRUMPF TruBend Series



Consistent management system from order to shipment

We carry out an integrated system from planning, orders, to design process, production, painting and shipping. As a result, not only are we able to continuously and reliably manufacture products including design proposals solving customer problems, but this also leads to reduced costs with a shorter period for production.



Enhanced follow-up service

With the customer's first principles, we have three follow-up steps as a service standard. Based on QDC (quality, delivery, and cost), we will promptly respond to various cases e.g. if nonconformity occurs after delivery.



Strict process control to maintain high quality "FW-ISO"

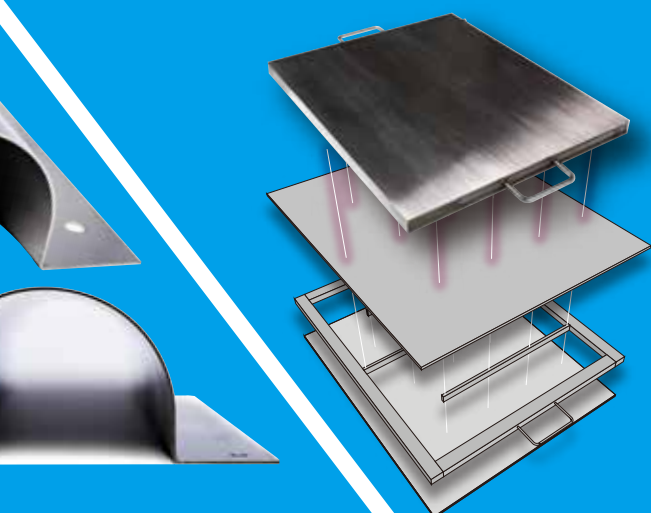
In 1999, Fujita Works, was the first industrial company in west Japan to acquire ISO9001 certification, an international standard for quality assurance, in order to keep the highest quality. In addition, we acquired an international standard "ISO14001" for environmentally friendly management systems in 2007, and "JIS Q9100" certification for compliance with aviation quality in 2016. Moreover, we evolve further with our original management standard "FW-ISO". In addition to meeting the demands and expectations of our customers, we appreciate developing our business using natural resources such as raw materials in Kirishima, while ensuring future generations enjoy the same nature in Kagoshima and Kirishima. That is the mission of Fujita Works.



溶接

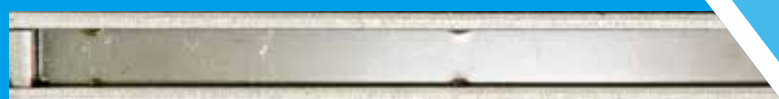
Correspondence with various welding techniques

Fujita Works uses various welding techniques such as YAG welding, TIG welding, and projection welding depending on product specifications.



Low distortion and high airtightness by YAG welding

Ultra-high precision sheet metal, YAG welding, and projection welding make it possible to manufacture products with high airtightness and high flatness.



Simultaneous metal welding of five heterogeneous layers

We perform simultaneous welding of five layers of material, such as titanium, nickel, and steel by projection welding. (Patented)



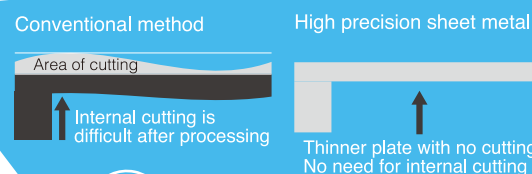
Extreme thin sheet metal welding [SUS0.3mm]

We perform continuous Kuranami welding o 0.3mm thick sheet by YAG welding. The weld will not crash even after the drawing process.



Design-engineering that meets diverse needs

In order to make proposals that fit the customers' needs, Fujita Works is working not only on design and sales, but also on creating a system that aggregates opinions and ideas from operators. We then quickly reflect technical skills into design and development. Its process is called "Design-engineering" where improvements are identified through every trial and error, and products are created to meet customer demands, and it creates an organization and manufacturing system that can solve various issues raised from design and prototyping. Fujita Works pursues customer-focused design and perfection, increases added value for customers, and aims to be DANTOTSU No.1 in customer satisfaction as well.



Flatness

When distortion or warpage occurs due to heat or material stress while manufacturing a structure, it is common to adjust the flatness by cutting after processing. However, Fujita Works has an accumulative accuracy with high techniques in punching, bending and welding, and also has knowledge to minimize quality degradation. It ensures a high percentage of flatness, therefore, there is no need to adjust after welding, and it enables quick delivery and reduces weight.

TIG welding



- Shallow and wide welding range
- Long welding time
- Large thermal distortion

YAG welding



- Deep and narrow welding range
- High strength welding
- Short welding time
- Minimal thermal distortion



Airtightness

YAG welding has a narrow beat width and can be welded with low distortion, and it is possible to ensure high airtightness through a synergistic effect with high precision sheet metal.



We use the same precision digital trackers as inspection in machining processes as well



High quality

We conduct nondestructive testing and inspection to check the strength and dimensional accuracy required for products. We then analyze this data and reflect on the creation of higher quality products, and our traceability is perfect.



Short and punctual delivery

Fujita Works has shortened the process by our original precision sheet metal techniques, and it has become possible to respond with a short delivery time. In addition, proposals from the design and development stage can contribute to advancing the delivery date, including the development schedule.



Outstanding response and production capacity

We manufacture complex products with high difficulty by using 3D data, and design verification is carried out with consideration of product characteristics. Moreover, the latest facilities and original production know-how enables overwhelming production capacity.



Production technology support

- The original know-how cultivated by Fujita Works has been ported to the latest facilities and tools
- Effective use of 3D printers
- Joint development with manufacturers



Performance

Customer nonconformity rate

0.0085%

On-time delivery rate for Company A

UNTIL JUNE 2011
ACHIEVED
99
CONSECUTIVE MONTHS

JUNE 2011 - AUGUST 2019
ACHIEVED
98
CONSECUTIVE MONTHS

Total production amount

AVERAGE LOT
10

2,130,000

Performance in 2018

Fujita Works manufacturing goes to the world.
The challenge to DANTOTSU No.1 continues.



AVIATION INDUSTRY



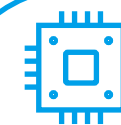
HOME DOOR
(TRANSPORTATION INFRASTRUCTURE)



CAUSTIC SODA
(ROCKET FUEL)



VARIOUS MANUFACTURING FACILITIES



SEMICONDUCTOR RELATED WORK





Fujita Works would like to be the best partner with customers, one that goes to “DANTOTSU No.1” together. Employees and family are important companions that are indispensable to achieve this. “Customer-oriented” and “employee focus” are Fujita Works’ policies. Sail with our employees, who are friends and family on a ship named “Fujita Works”. IN THE SAME BOAT. Why don’t you take an adventure in this ship together?

DANTOTSU NO.1 With You.

“Impressions received from customers” are “impressions of Fujita Works”.

It is the pleasure of Fujita Works to succeed with our customers.

We want to impress our customers with our products, and succeed together as partners.

The Fujita Works’ aim, “DANTOTSU No.1”, is a stage that we enjoy with our customers and all of you.



 **Fujita Works** <http://fujitaworks.com>

E-MAIL info@fujitaworks.com

Head Office 12-18, Uenohara Technopark, Kokubu, Kirishima City, Kagoshima
 Kirishima Factory 12-18, Uenohara Technopark, Kokubu, Kirishima City, Kagoshima
 Kokubu Factory 11-27, Uenohara Technopark, Kokubu, Kirishima City, Kagoshima
 Miyazaki Factory 2509-1, Higashifumoto, Nojiri-cho, Kobayashi City, Miyazaki
 Tokyo Office OTA Techno Core 409, 6cho-me, 4-17 Higashikojiya Ota-ku, Tokyo

General Affairs Department Phone +81-995-46-6100 FAX +81-995-46-7364
 Manufacturing Department Phone +81-995-46-6103 FAX +81-995-46-7363
 Tokyo Office Phone +81-3-3745-0300 FAX +81-3-3745-0331